

Installing USB Drivers for Stage II EMS



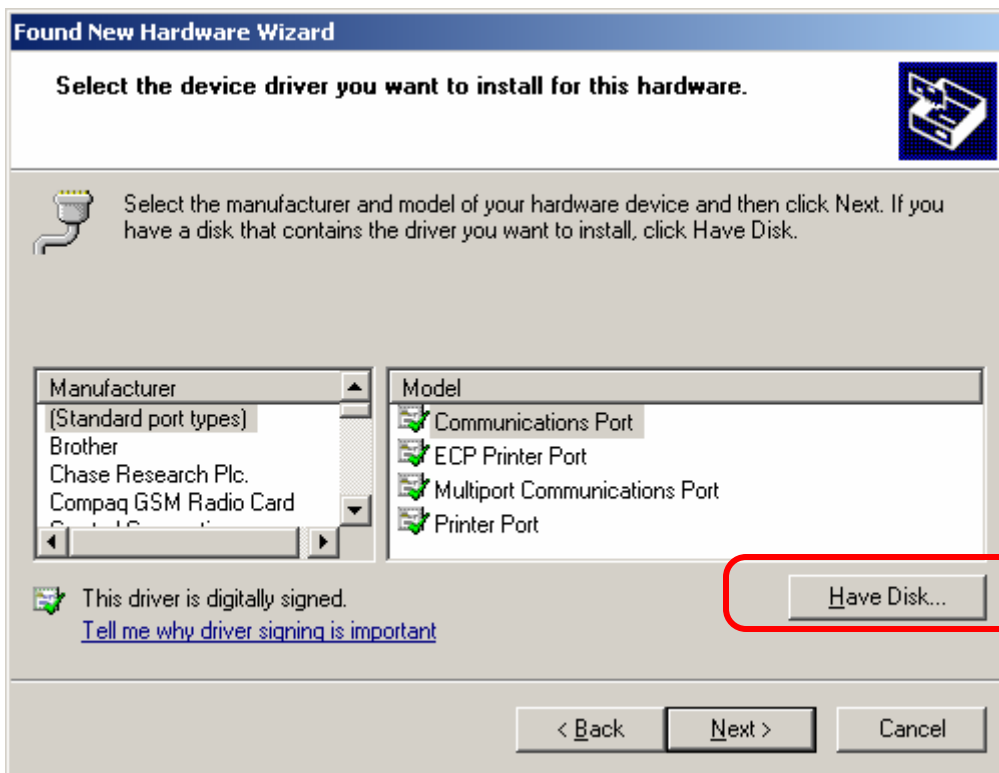
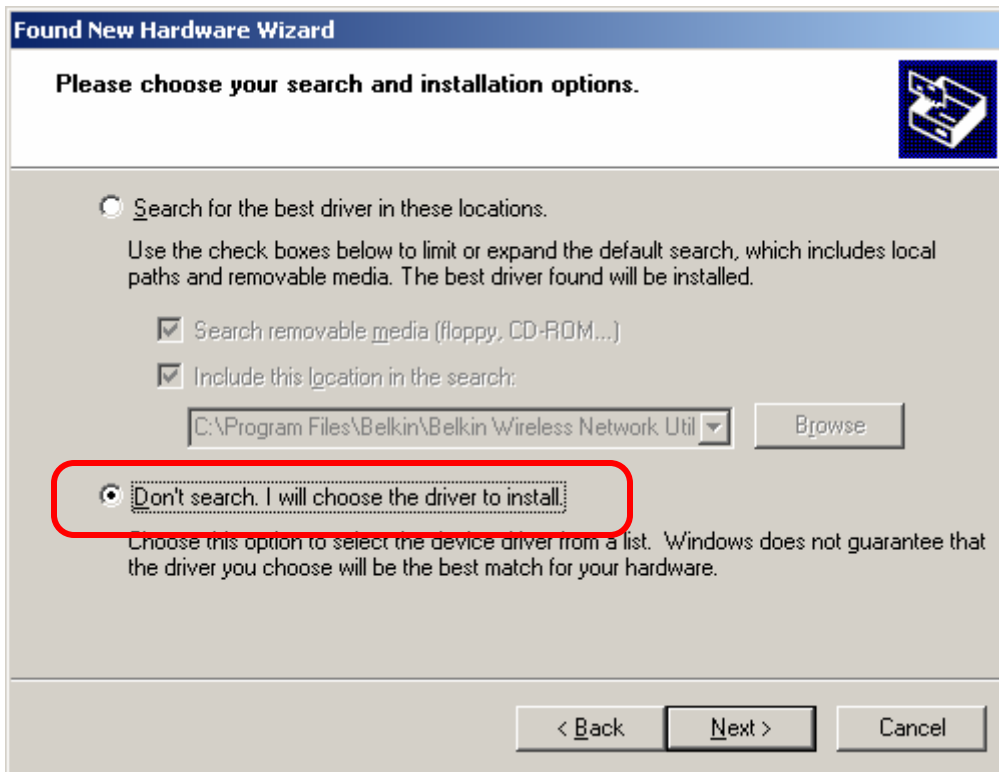
Installing Stage II EMS USB drivers for XP, 2000 and Vista

1. Plug in the USB cable to your PC and the other end into the EMS (EMS USB port is powered via the PC's USB port)

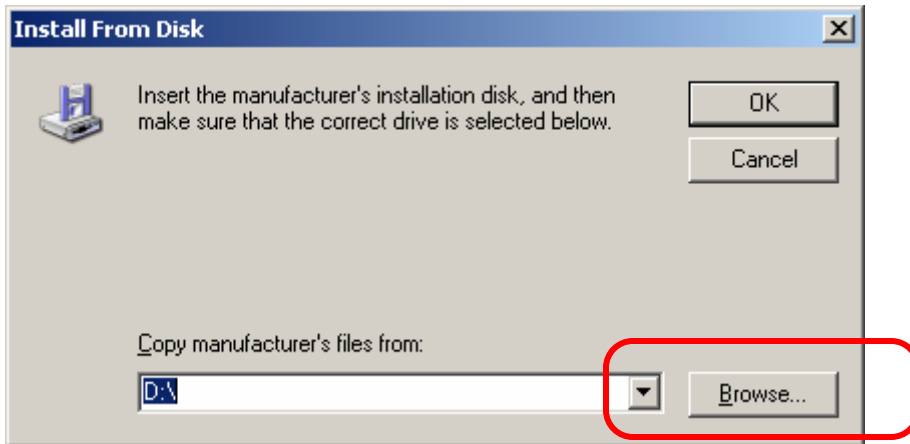
Note: Your operating system may vary from the screens below.



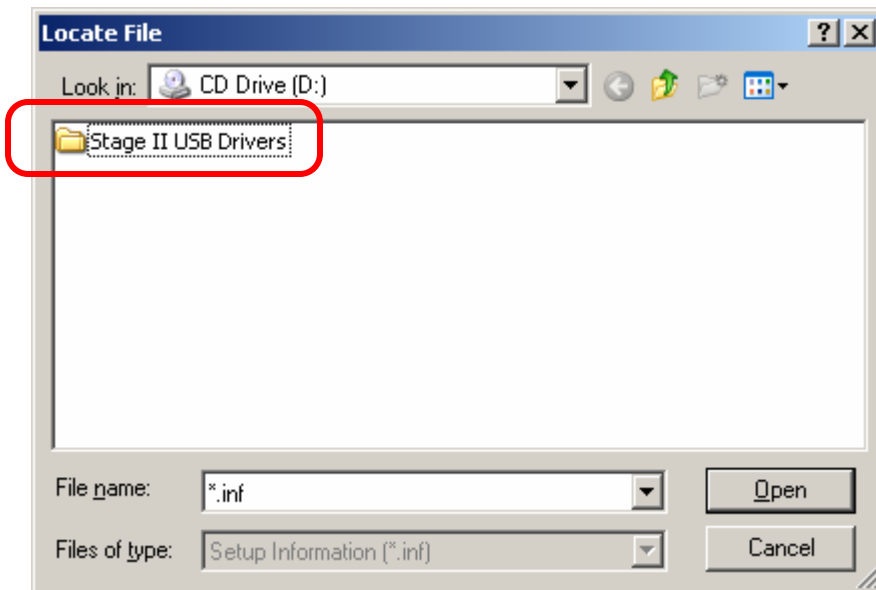
2. The above window should appear. Please select the option [Install from a list or specific location] **DO NOT LET WINDOWS AUTOMATICALLY INSTALL THE DRIVERS!**



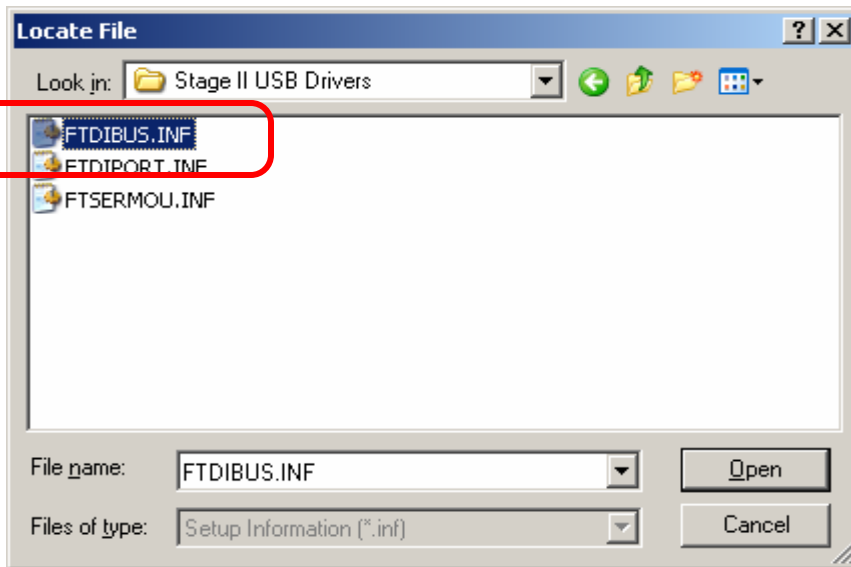
3. Select [Have Disk] button



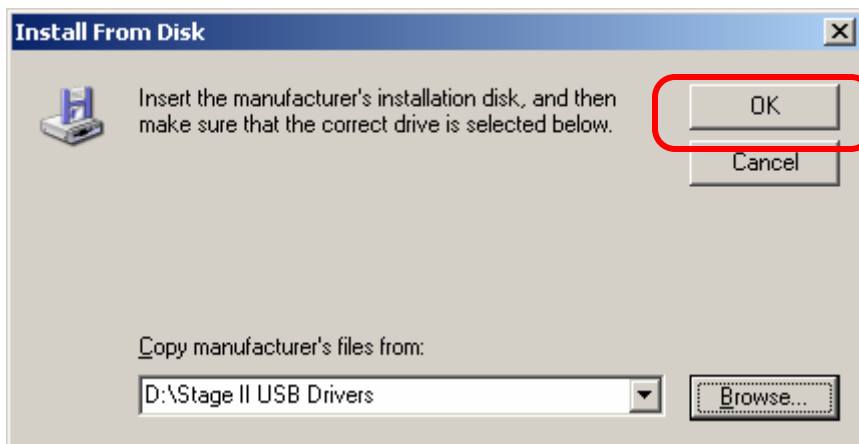
4. From the [Browse] button, select the CD drive



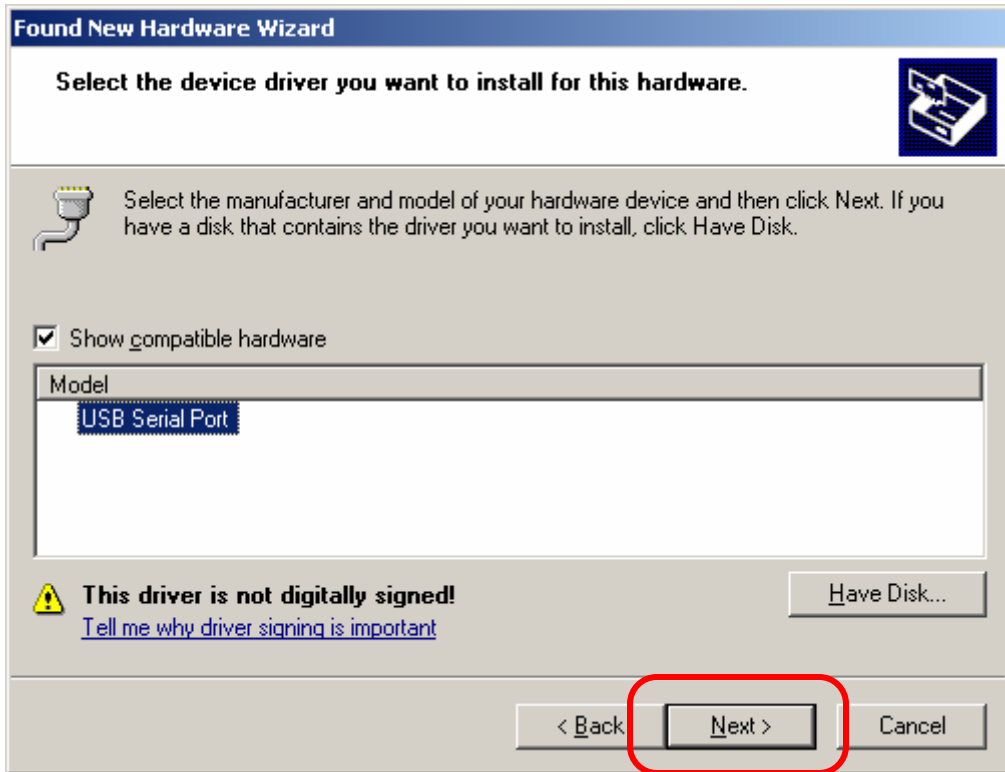
5. Double click the [Stage II USB Driver] folder



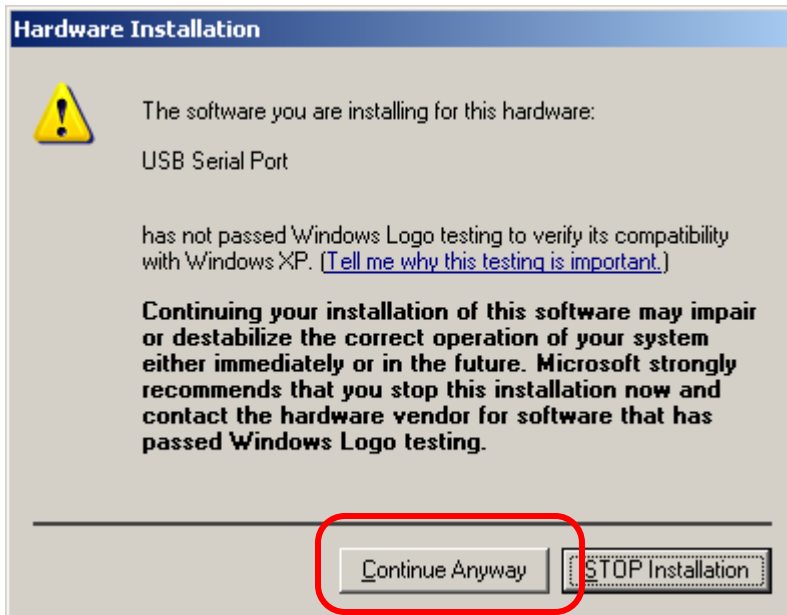
6. Select the FTDIBUS.INF file



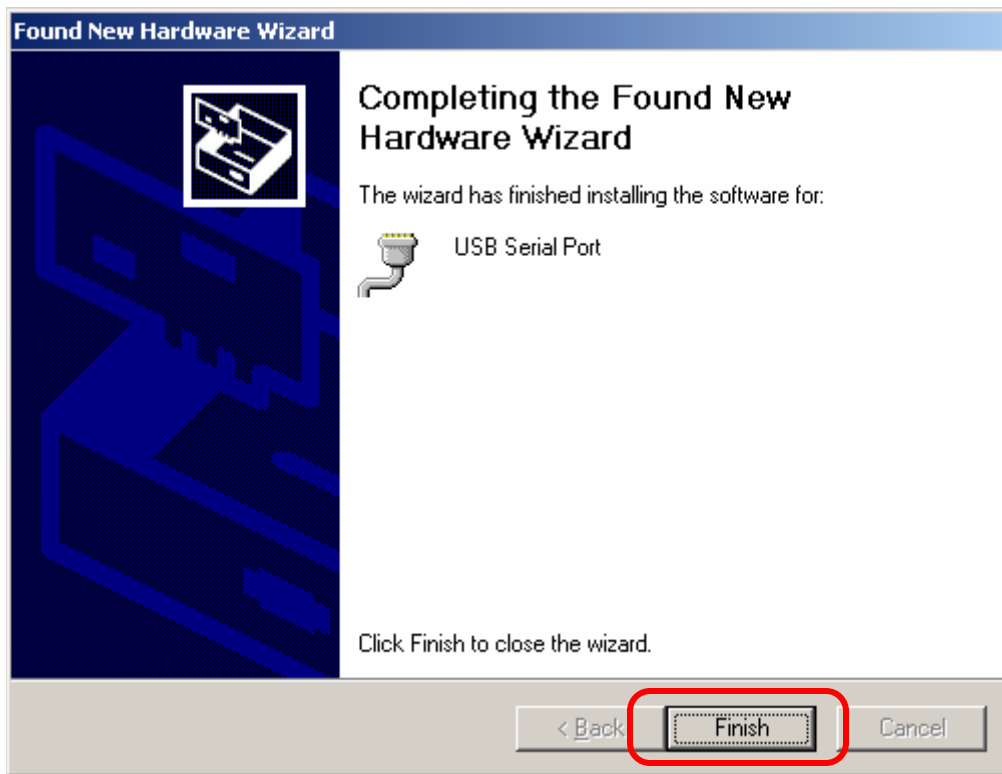
7. Select [OK]



8. Select [Next]



9. Select [Continue Anyway]



10. You are now complete!